

gris

gras

gros



ours

loupe

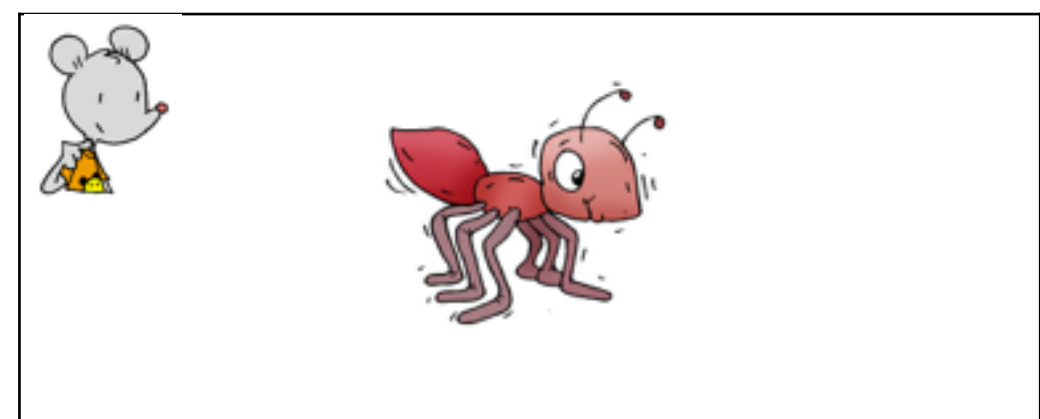
mou



brise

bras

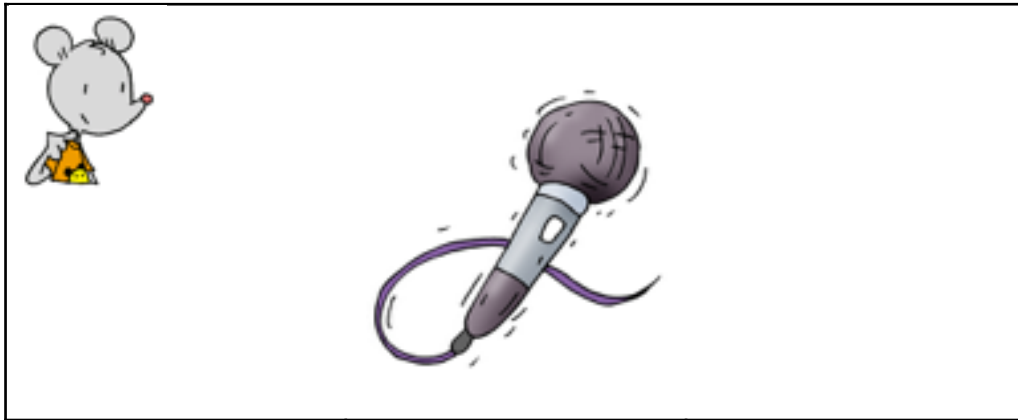
brosse



fourmi

fusée

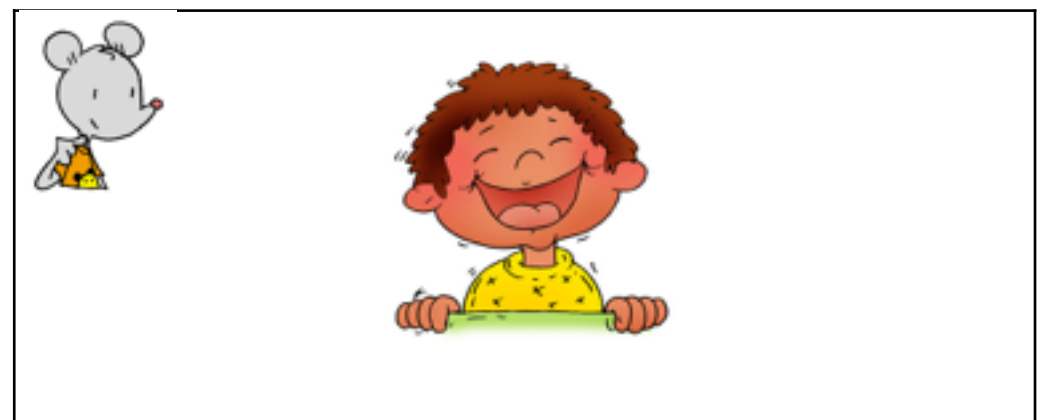
flamme



micro**e**

min**e**

micro**o**



rit**e**

rir**e**

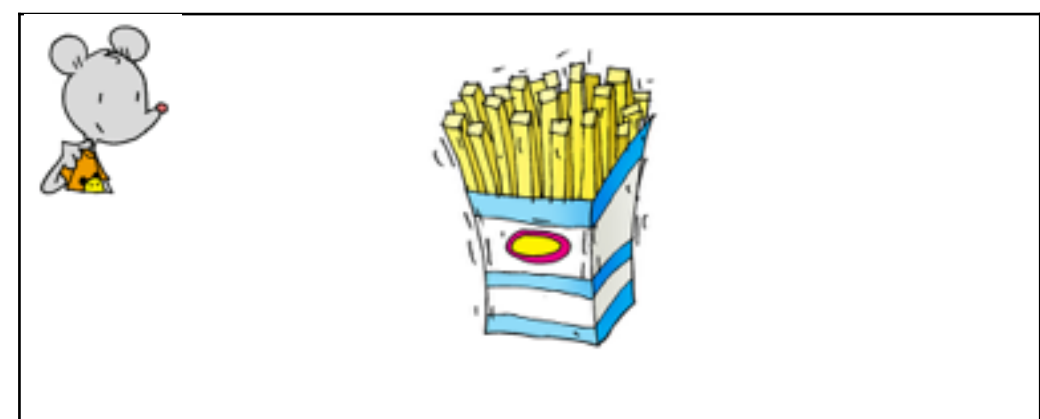
rim**e**



mar**e**

mar**te**au

ma**m**an



fa**o**

fil**o**

frit**e**



prise

pas

porte



drap

drapeau

peau



crabe

ananas


arbre





riz


rideau

ride

		
cane	canette	canari

		
conte	bras	cobra

		
tôt	tigre	taureau

		
broche	brocoli	bravo